



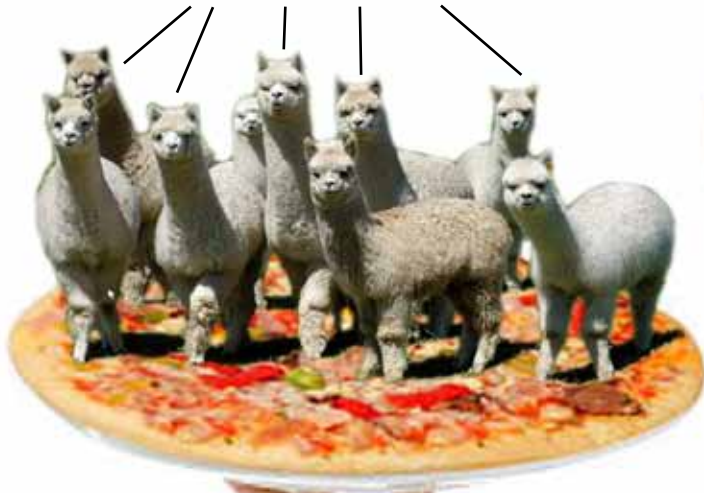
Beverly Rotary Club Sprocket Newsletter

May 6, 2021
Issue 42



WHEN THE MOON HITS YOUR EYE LIKE A BIG PPP PIZZA PIE, THAT'S AMORE!

On behalf of the Alpaca Lobby, we DO NOT endorse Alpaca Pizza. We are too cute and fuzzy to be consumed with cheese. Stick with pepperoni!



You know that guy was a Salem Rotary President? I'm glad they upped the qualifications in OUR CLUB to bring premier leaders* such as myself to the fore front! Hey folks only two months left for me, then off to Disneyworld!



Speakers Coming Up

May 7 Tim Backland -
Waring School

May 14 Jerry Parisella -
Beverly State Rep

*Photo collage does not represent President Marshall who is quite fit and trim. It was best shot to make goofy cover photo.

Pay for lunch, happy dollars, or just a good old donation. Keep the dream alive
<http://bit.ly/Rotaryfineshappydollars>

SHUKA Associates Inc.

Real Estate Appraisal, Appraisal Review & Consulting

John A. Shuka, MAI, SRA, AI-GRS

8 Enon Street, Suite 1B
Beverly, MA 01915
978-921-1700

www.shuka-associates.com

CCI Reprographics

A Full Service Copy Center
AV Rentals & Services

Serving Beverly Since 1979

Alex Ushakoff III - owner
4th generation Rotarian

110 Cabot Street 978-922-3773
Alex@CCIREpro.com



Good Food, Drink & Fun
241 Jefferson Ave. Salem MA
www.tinwhistlesalem.com • 978-741-1912

Beverly Insurance

100 Cummings Center
Suite 106N

Personal and Business
Insurance

978-524-8501
email:mike@beverlyins.com



Keep your facility clean and disinfected with
JAN-PRO of Northeast Massachusetts.

WE SPECIALIZE IN CLEANING & DISINFECTING:

- Office Buildings
- Medical Facilities
- Daycares and Schools
- Restaurants
- Auto Dealerships
- ...and more!

CALL FOR A FREE ESTIMATE!

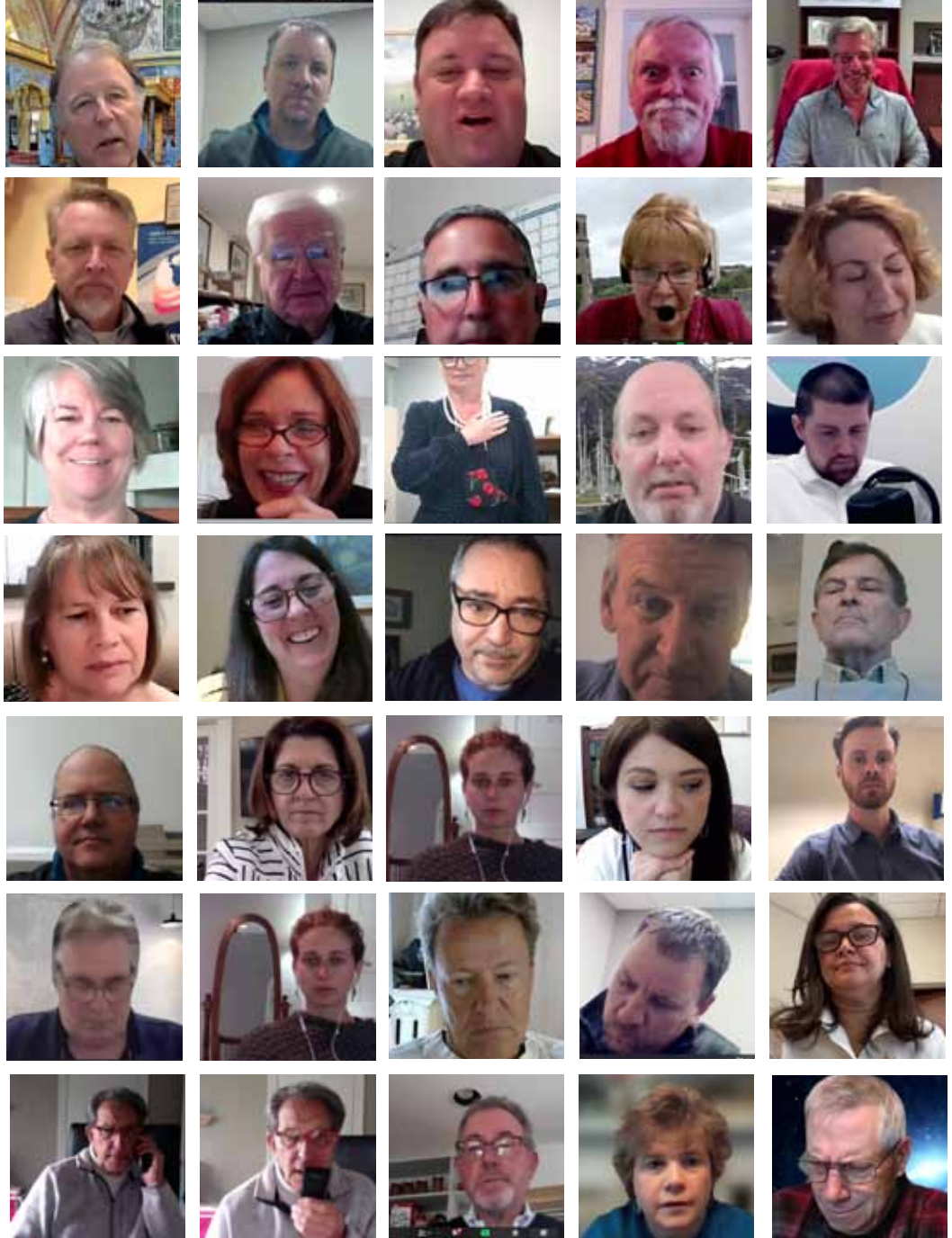
781-482-7990 | JAN-PRO.COM/MASS



Mark Morehouse
Cleaning services provided by independently owned and operated JAN-PRO cleaning franchisees.

Zoom with Beverly Rotary

The happy faces are abound in our weekly zoom meetings. Is that Larry H in lower left on phone TWICE during meeting? You know if regular in person meeting hefty hefty fines would be levied. What could be more important than a Rotary meeting at 12:15 on a Thursday? Really Larry?



Walter W Hartford, CFA
Financial Advisor

55 Market Street
Suite 102
Ipswich, MA 01938-2262
978-356-3002

Edward Jones
MAKING SENSE OF INVESTING
edwardjones.com



american family care®
URGENT CARE

50 DODGE STREET, BEVERLY MA 01915
978.922.2171 | AFCUrgentCareBeverly.com
450 PARADISE RD, SWAMPSCOTT, MA 01907
781.691.9366 | AFCUrgentCareSwampscott.com



Michael C. Jones
President

www.mcjins.com

Phone 978-338-4670
Fax 978-522-8388
Mobile 978-828-5822

409A Cabot Street
Beverly, MA 01915
mike@mcjins.com

Desjardins
JEWELERS

978-922-2149

Commodore Plaza,
47 Enon Street
Beverly, MA 01915-3601

TEMKIN
FINANCIAL GROUP, LLC



Alan L. Temkin
Financial Planner
781-876-4175
atemkin@temkinfinancial.com

www.temkinfinancial.com

301 Edgewater Place, Suite 200
Wakefield, MA 01880

Alan L. Temkin is a registered representative of and offers securities, investment advisory and financial planning services through MML Investors Services, LLC. Member SIPC. Temkin Financial Group, LLC is not a subsidiary or affiliate of through MML Investors Services, LLC, or its affiliated companies. 200 Clarendon Street, 19th and 25th Floor, Boston, MA 02116. 617-585-4500. CRN202111-256179



The leading provider of custom-designed
workforce training programs.

NORTH SHORE COMMUNITY COLLEGE

Corporate Training SOLUTIONS
Train your people.
Transform your company.

Dianne Palter Gill, Ed.D.
978-236-1225
dpalterg@northshore.edu

corporate.northshore.edu

STERLING
INSURANCE AGENCY, INC.

Established in 1929 & Still Growing!

Auto • Home • Business • Health • Life

Richard F. Mooney Jr.
president

306 Cabot Street, Beverly, MA
(978) 922-6600

Last weeks news, Thursday April. 29, 21

Meeting was called to order by President Marshall Handy promptly at 12:15.

Pledge of Allegiance was led by Al Temkin., followed by Freddi and Lady Gaga leading us in The National Anthem and an invocation led by Neiland Douglas.

"Happy Birthday" was sung mentally for Healey, Kerry Apr 30
Kinzie, Frank May 03
Murphy, Robert May 05
None of whom were in attendance.

The following were guests of the Beverly Rotary club:

David Duestch from the District Team
Lisa Carbone - guest of Ellen "Nicely" Dunn
Mary Grant - today's speaker

Announcements:

Kudos to Brian Murphy for organizing traffic island clean up, and many thanks to all who participated.

Beach clean up Saturday morning 8-12. Remember all, this is a service club "Service before self". This is an easy way to enjoy the outdoors and serve your community at the same time.

Carwash at School for the Deaf on Friday May 7

June 3 Hybrid meeting format. Same cost. Raffle TBD. Guests not encouraged in-person right away.

Connor Mooney - "Friend Raising" event. Scavenger hunt Starting May 29 - June 26 with the goal of making the club more visible in the community. \$10 per person with 4-person team, only 1 Rotarian per team. Big prizes. Cool app.

Jackie Rap. Care packages to 40 veterans living in Beverly. Looking for \$10 donations.

Mike Jones. Fundraiser "You've been Rotarized". Decorating yards (in the dead of night.). Email with details coming soon.

Sergeant-at-Arms Dr. Bill Beckman

Happy Dollars

• Moiph - thanking those who worked on the traffic island garden Only one rabbit murdered

- Mike Jones for unspecified glory
 - Sheryl Meehan - Happy to see Mary Grant here today
 - Adam Winn - Youngest Daughter accepted to Essex Tech.
 - Walt Hartford - adopting dog, 7 lb. Chiweenie Fines
 - Mark Brislin who's in FL
 - Nick Biancucci for showing up
 - Eric Immerman for his studio setup
 - Lauren Belmonte - expecting first baby !!
- Spring Cleaning was Bill's theme. Rotarians divested themselves of interesting items the previous week including:
- Diane - Polish recipe book
 - Marshall - Hash collection in basement
 - Jackie - wig collection
 - Neiland - vintage pension application
 - Almiris - clothes closet.
 - Freddi - bodily fluids
 - Dianne - McGovern '72 campaign button
 - Moiph - comic book collection
 - Al - spare change lying around

Guest Speaker / Program:

Mary E. Grant, RN, MS, is a former Beverly State Representative whose time in the legislature concentrated on public policy, public health, mental health, and social services among others. An adjunct professor at Regis College for many years, she also taught for one year at Endicott College. Prior to that, she was also in private practice for general population with specialties in children, adolescents and psychological trauma and dissociative disorder with the Burke, Grant, Nazaroff, Cusick and Bunin from 1989 to 2014.

She is also a former Clinical Director, Long Term Services and Support for the Commonwealth of Massachusetts/Mass Health and served one year as the Director of Public Affairs for Care Dimensions.

She will talk to us about mental health and Covid focusing on some of the issues arising from the pandemic such as exhaustion, focus, mood, etc.

Mary spoke about the some of the lasting effects of the Covid pandemic especially the need for additional mental health care for first responders and others.

Meeting Adjourned at 1:30:

Respectfully Submitted,

Nick Biancucci

Scribe of the week:

Mother's day is May 9th

Support us while you shop for
gifts at smile.amazon.com

[amazon](http://amazon.com)smile



True to our Communities



We are proud to support the
Beverly
Rotary Club

Eastern Bank



Beach Clean Up

Thanks to all who helped with the beach cleanup last weekend, actually kind of light pickings unless you count Tom Chatellier's 100lbs of wet rancid towels. 7 beaches cleaned from Rice's To Bear park. Walt K did bring vintage ski pole to cut through the tinsel.

Top picked up items:

- Nip Bottles
- Dog poop bags (not discarded yuck!!)
- Plastic Bottles
- Unused script of Bob Murphy screenplay
- Absentee Ballots for Vermin Supreme
- 1 Hypodermic needle (used)



Matthew H. Piaker,
JD, LLM, AIF®

Tel: 978-927-3123
Email: mpiaker@cfaemail.com
100 Cummings Center, Ste. 207P
Beverly, MA 01915
www.capitolfinancialadvisors.com



Securities and Advisory Services offered through Commonwealth Financial Network, Member FINRA/SIPC. Advisory services offered by Capitol Financial Advisors, a registered investment adviser, are separate and unrelated to Commonwealth.

Montserrat College of Art

where creativity works®

visual art & design education
continuing education for all ages
public art galleries

beverly, ma | montserrat.edu

Helping Local Businesses Thrive.

To contact one of our commercial lenders call (978) 573-1300 or visit northshore-bank.com/lenders.

NORTH SHORE BANK

Well north of your expectations.™
northshore-bank.com | [f](#) [t](#) [i](#) [i](#) [n](#)

Member FDIC Member DIF Equal Housing Lender



Worldwide Adventures of Handy

What? Sorry. I just blanked out there -- recalling a glorious spring morning, idling in a café on the Boulevard Pfaffenthal in Luxembourg, the charming capital of the charming principality of the same name. I was nursing a hot kaffi drenke and wondering how, so close to France, a good croissant was hard to find. While I grumbled about the "jam sandwich" on my plate which dared me to take a bite, my trusty mastiff Oliver Wendell Hounds growled. OWH was either still irritated by his enforced kennel visit (this was the olden days, when only animals were quarantined when entering a country); or impatient for his order of smoked neck of pork with a side of broadbeans; or reminding me that we were here on business, the case I called 1,001 Schnoodles. It's no accident that we were encamped midway between France and Germany. Where else to track down the madcap breeder of schnoodles, that fiendishly cute and deceptively intelligent combination of schnauzer and poodle? Not to mention her syndicate aiming to disrupt international financial markets with a deluge of stinky cuteness. The ringleader of this mercileas cabal was the enigmatic vestige of Luxembourg nobility Baroness Helga Claudette von Schnoodlestein. There was no time to waste! I dashed to my curbside Bugatti Veyron (fastest street-legal auto on the planet with a top speed of a gazillion+/- kilometers per hour), as OWH hopped into the rear cockpit. We carved our way through the towering Kneiff like a Knife through butter to Castle von Schnoodlestein and issued the cease and desist order hot off the press from the World Court. Our German efficiency delivered us back to the city in time for a delightful déjeuner. "Try the small river fish," I suggested to OWH. Hounds pointed to the menu, preferring a second helping of smoked neck of pork and growled. Translation: "Forget the cuteness, schnoodles are plain stinky." Nuf sed. Till we cross meridians together,

Handy

Eagle Strategies LLC



Edward F. Cahill, J.D., CFP®, CLU®, ChFC®
Financial Adviser

(978) 927-9352 • 306 Cabot Street, Beverly, MA 01915
ecahill@ft.newyorklife.com • www.edwardfcahill.com

Agent, New York Life Insurance Company.
Registered Representative, offering securities through NYLIFE Securities LLC,
Member FINRA/SIPC, a Licensed Insurance Agency
201 Jones Road, Fifth Floor, Waltham, MA 02451 • Tel: 781-647-4100
Eagle Strategies and NYLIFE Securities are New York Life Companies

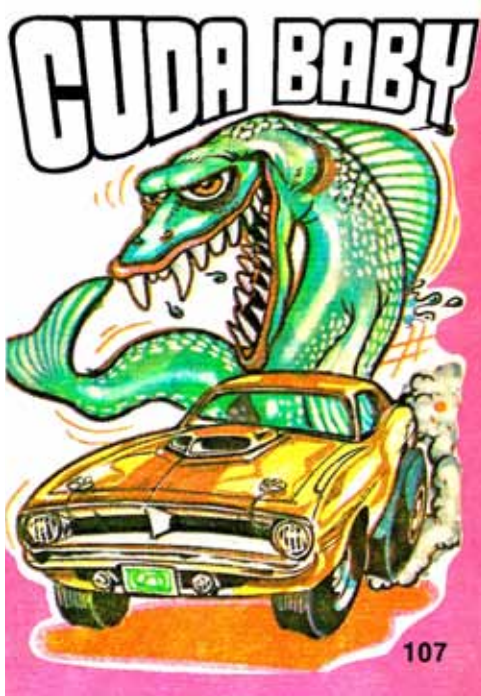


Last Weeks Speaker - Something About Mary

Mary grant gave an impassioned speech last week on the mental health and related issues due to COVID. A few very surprising facts about healthcare workers and the issues they have dealt with. Us non health-care workers should acknowledge the extremely difficult work they've done, in addition to dealing with their own issues they had to be the backbone of families who couldn't be with their families at the end of life. All pretty distressing but nevertheless interesting to hear. On a lighter note if you cut out Mary's photos you can make a flip book and pretend we met in person.

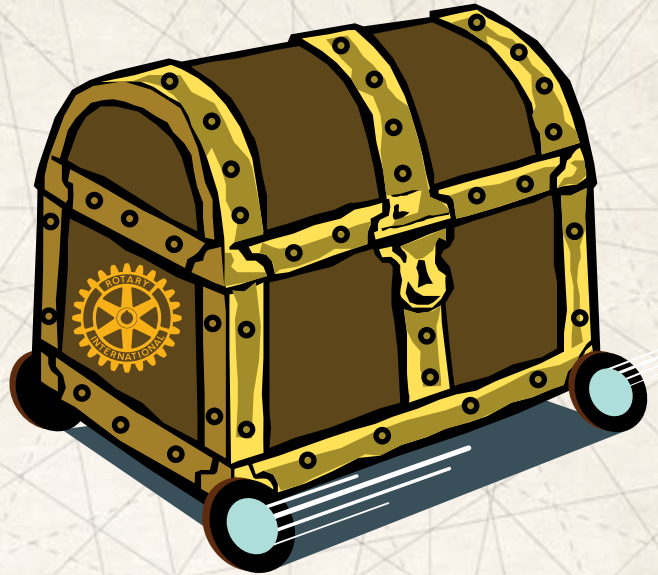
Car Wash Baby

Tomorrow we will be doing a carwash at Beverly School for the Deaf. Rotary has for years supported this group and this is a way to pay back the teachers for their fantastic work. From 12 - 3, contact Eric if you can help and bring a bucket of suds. Doubtful you'll see a car like at right, but it would be AWESOME if you did. Muscle cars don't get powered by electricity 440cc of pure muscle!!!!



Walter Hartford's new dog Fifi, Don't get too close, not trained just yet!

Beverly's Treasure Hunt



WHEN

**Starts
Saturday,
May 29.**

**Ends
Saturday,
June 26th.**

PRIZES

\$1,000
for the
winning team,
\$500
for second.

WINNERS

The team with the most points from the scavenger hunt wins. In case of a tie, there will be a drawing.

PROCEEDS

Any proceeds will be used toward Beverly Rotary's Gazebo on the commons rehabilitation project.

TEAMS

**\$10 per person on the team.
Max number on the team is 4.**

Sign up at
<http://bit.ly/BEVTREASUREHUNT>
anytime before the hunt is over.

Everyone is welcome to participate! Teams do not have to include a Rotarian to sign up. And to encourage lots of non-Rotarian participation, we are limiting teams to a maximum of 1 Rotarian on each team.

SPONSORSHIPS

**Sponsor your own business
or a business you want in the
hunt(with their permission).
\$50 each sponsorship.**

Business or non profit must be located in the city limits of Beverly to be part of the hunt. Sponsors do not need to be from Beverly.

**Contact Tim Liporto with questions
978-767-3767 or tliporto2@gmail.com**

